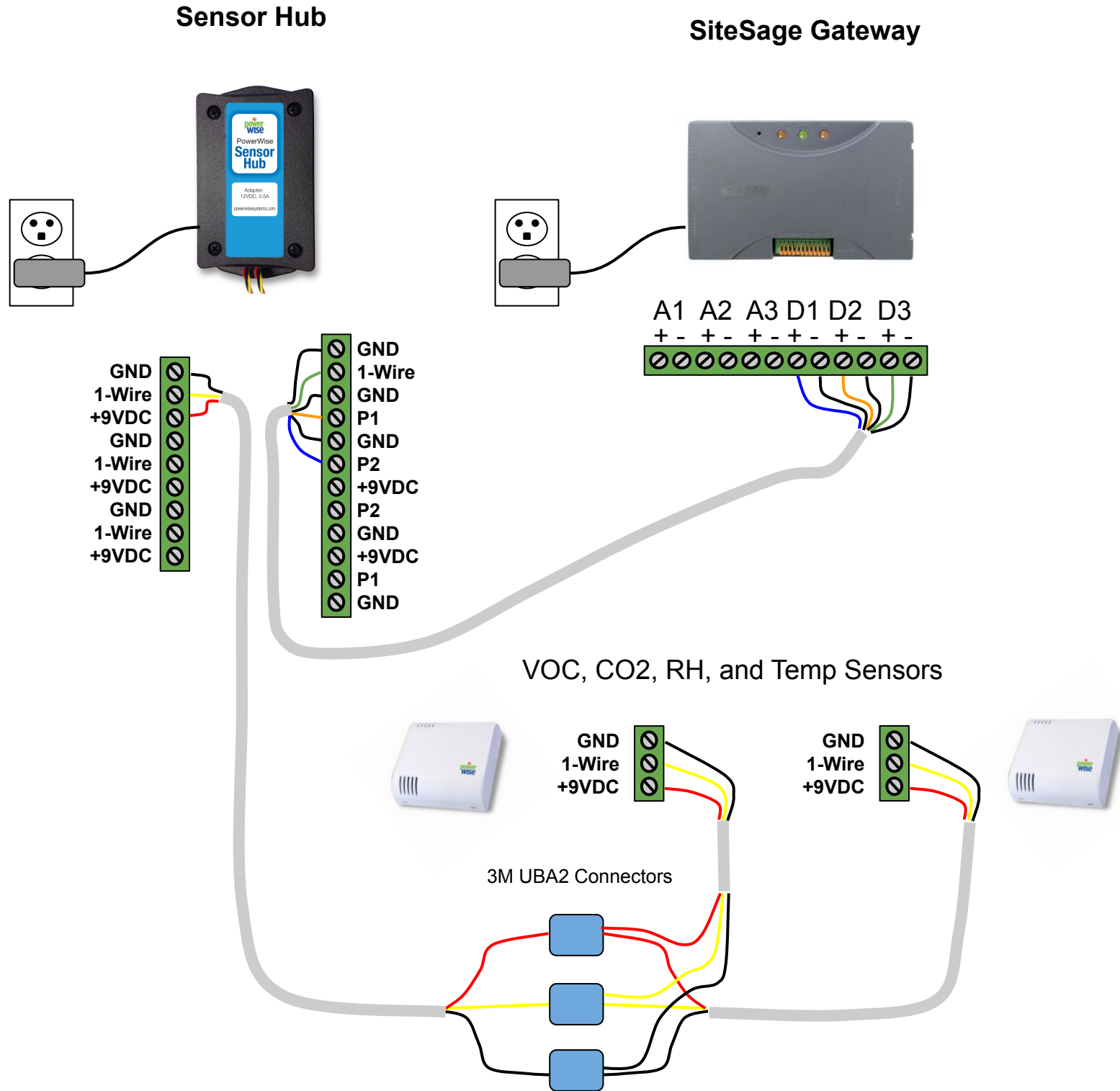


POWERWISE SENSOR HUB, GATEWAY AND 1-WIRE WIRING DETAIL 2.0



PowerWise
124 Main St
Bucksport, ME 04416



NOTES:

- I. Gateway must be within 30 feet of the SiteSage Energy Monitor (not pictured but located in electrical panel). Gateway connects to a network via ethernet or wireless.
- II. The SiteSage Gateway includes 3.3 VDC power supply. The device can also be powered over ethernet. However, it must be a passive POE with a voltage between 37 - 57 VDC, meaning the POE voltage is always present.
- III. Sensor wiring trunks should be 100 feet or less.
- IV. PowerWise recommends using CAT5 or better with one twisted pair for the 1-Wire signal and ground.
- V. Maximum number of sensors is 4 per Sensor Hub / Gateway.
- VI. The trunk wire should not be spliced by cutting. Best results can be achieved using insulation displacement splices like the 3M UBA2 Connector. See https://www.youtube.com/watch?v=Y6hGU2W_M4
- VII. Splices to the trunk should be 5 feet or more apart.
- VIII. Do not run 1-Wire next to high-voltage wires.