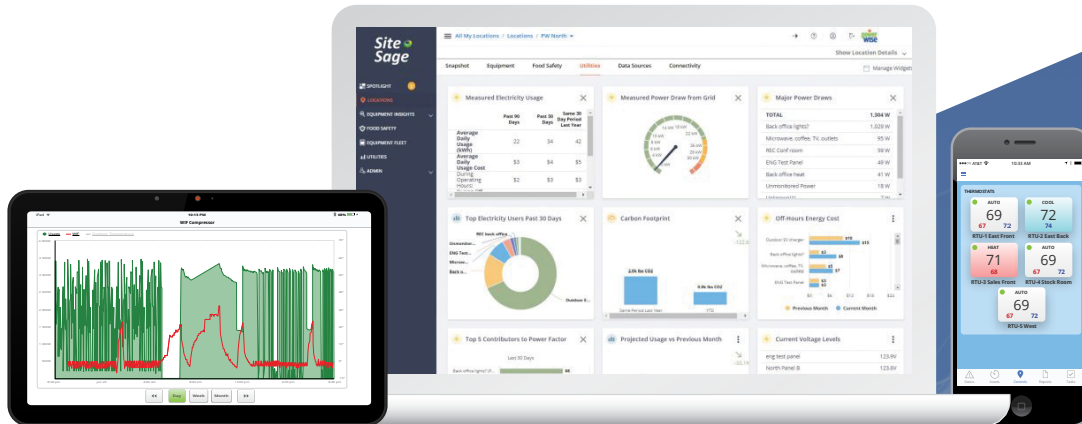


SiteSage® Energy and Asset Management



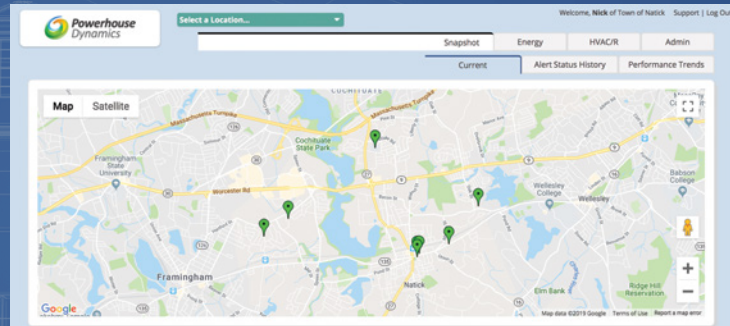
- Reduce energy costs including demand charges
- Schedule heating, cooling, and lighting
- Manage equipment remotely via laptop or mobile
- Manage multiple buildings and locations
- Receive alerts and access reports on many conditions

PowerWise Systems
124 Main St, Bucksport, ME 04416
207-370-6517

www.powerwisesystems.com
sales@powerwisesystems.com
support@powerwisesystems.com

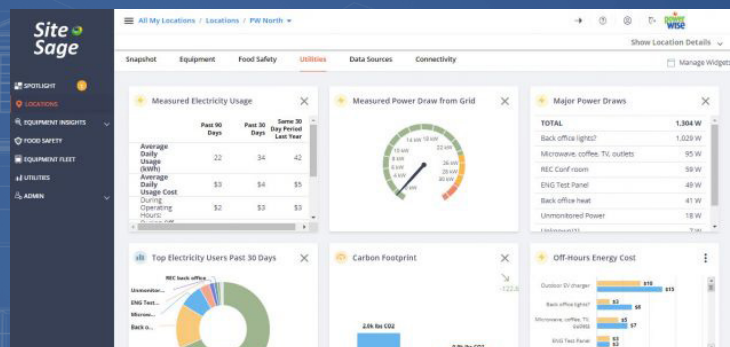


Energy Management



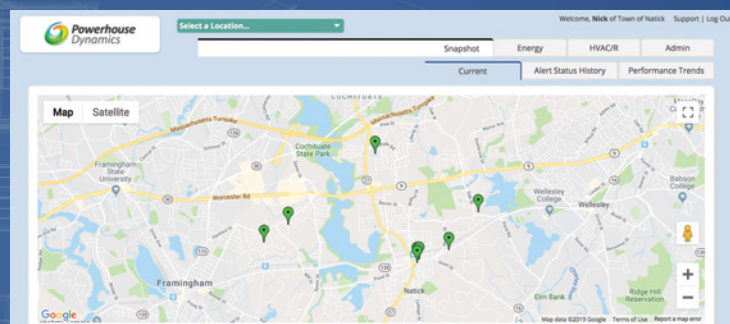
- ❑ See costs and runtimes by day, week, and month
- ❑ Identify wasted energy
- ❑ Track mechanical system performance
- ❑ Compare energy use during business hours and off hours
- ❑ Access real-time information and historical reports

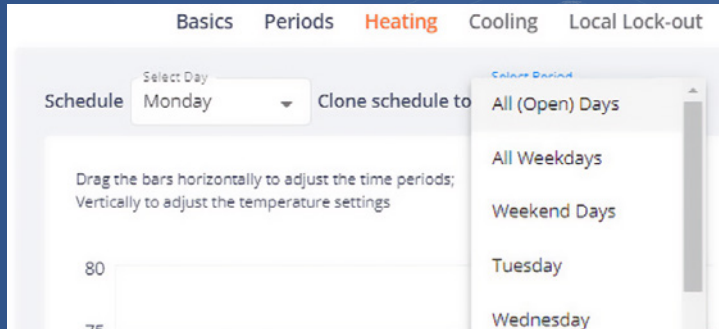
Equipment Analytics



- ❑ Compare mechanical systems across multiple locations
- ❑ Identify equipment maintenance before emergency repairs
- ❑ Receive alerts for RTUs, refrigeration, and compressors
- ❑ Know if equipment is not running or out of schedule
- ❑ Track performance alert history by mechanical system

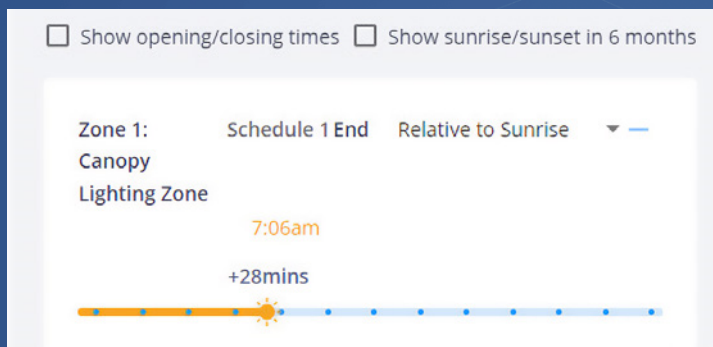
Asset Management





HVAC Control

- ❑ Deploy true enterprise-level remote controls with intuitive UI
- ❑ Set up to 8 heating/cooling periods per day
- ❑ Separate HVAC energy use from other energy costs
- ❑ Chart room temperature against target temperature
- ❑ Compare with relative humidity and outside temperature



Equipment Control

- ❑ Reduce energy costs with lighting and equipment schedules
- ❑ Change your SiteSage lighting settings remotely
- ❑ Schedule any lighting zone
- ❑ Use one on/off period or more per day
- ❑ Set on/off relative to sunrise and sunset
- ❑ Edit, add and change schedules

- ❑ Remotely monitor buildings and mechanical systems online
- ❑ Identify inefficient buildings and equipment relative to similar assets
- ❑ Track mechanical system performance
- ❑ Compare energy use during business hours and off hours
- ❑ Instantly access real-time information and historical reports
- ❑ Centralize equipment maintenance records, photos, status, and performance

Technical Specifications

SiteSage Gateway

1 x 10/100 RJ-45 Ethernet Port
3 Digital / 1-Wire Inputs
USNAP 2.0 Modular Connector

Communication Protocols

TCP-IP via Ethernet (802.3) 10/100base-T
Wifi (802.11/b/g/n)
MiWi Wireless (802.15.4) 2.4 GHz
Local via High Speed Serial Port

Environmental Specifications

5.25" L x 3.25" W x 1.5"H; Wt 6oz.
Operating Temp. -10C-+60C, 14F to 140F
Humidity 5% to 95%, non-condensing

Wired Protocols Directly Supported

1-Wire; Modbus; Pulse Counter

SiteSage Energy Monitor

15 CT Sensor Ports Six Pin expansion module (xPod) connector (up to 3)
Each xPod: 10 CT sensor ports
120V/15A breaker or optional step down transformer (277V)

Communication Protocols

MiWi Wireless 2.4 GHz connection to SiteSage Gateway
RS485 link protocol to expansion module (xPod)

Environmental Specifications

L x H x W: 7" x 2.5" x 1.875"; Wt 4oz.
xPod: L x H x W: 3.75" x 1.875" x 0.875"
Wt 2 oz.
Operating Temp -10C-+60C (14F to 140F)
Humidity 5% to 95%, non-condensing

SiteSage Sensor Pod

Inputs

(1x) 1-Wire
(6x) Digital
(6x) Analog
(1x) RS-232

Power

Output: (6x) 5VDC, (1x) 12VDC
Input: 5VDC, 1mA or 2AA Batteries

Dimensions

3.5" W x 2.75" H x 1.25" D

SiteSage SmartStat 46

Dimensions

3.8" H x 5.8" W x 1.0" D

Power: 24VAC from HVAC

RF Capable : Mi-Wi (802.15.4)

Programmable: 7 day, 4/6/8 periods/day

Stages: 3 heat (HP)/2 Cool

About PowerWise

Visit our Web site

www.powerwisesystems.com/products



Created in 2010, PowerWise provides commercial-grade monitoring and control technology for new construction and existing buildings.

The PowerWise team is extremely knowledgeable in the building monitoring and management field, with real-world experience that drives the creation and sales of creative, flexible, and cost-effective solutions.

The proof is that our solutions have been chosen by national brands, and have been used by universities, utilities, and agencies to validate new technologies and establish best practices for building and energy efficiency.



PowerWise Systems 124 Main Street, Bucksport, ME 04416 207-370-6517