

Compact Size, Accurate Measurements

IG4-212 DIAPHRAGM GAS METER

The IG4-212 is a compact and lightweight gas meter specially designed for submetering applications where small size and pulse output are required. The gas meter is precise and delivers highly accurate and stable measurements. Standard with the meter are tamper indicators on the register, pulser and meter body. Also, standard with the meter is a reed switch style pulse output designed for easy integration with communication devices or remote read-outs. Typical uses include Natural Gas or Propane Vapor* measurement.

HIGHLIGHTS

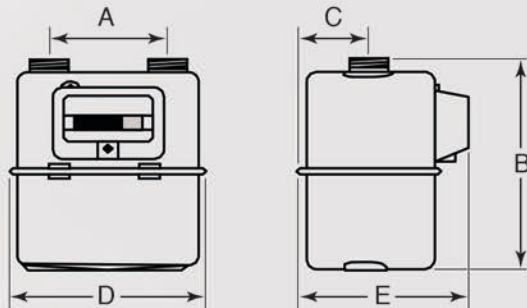
- Maximum Flow Rate (Q-Max): 212 CFH
- Minimum Flow Rate (Q-Min): 1.4 CFH
- Maximum Pressure: 20 PSI
- Operating Temperature Range: -10°F to 130°F
- Odometer Register Capacity: XXXXXXX.X
- Output: 1 Pulse = 1 CF
- Cyclic Volume: 0.04237 CF
- No Temperature Compensation

PULSE OUTPUT (SWITCH) SPECIFICATIONS:

- Maximum Voltage: 30VDC
- Maximum Current: 2mA
- Pulse Pigtail: 5 FT

PHYSICAL CHARACTERISTICS:

- Die Cast Aluminum Housing



DIMENSIONS (INCHES)					WEIGHT (POUNDS)	CONNECTION THREADS (INCHES)
A	B	C	D	E		
4.3"	9.1"	2.9"	8.2"	7.0"	4.0 lb	3/4"

*Consult IMAC Systems, Inc. for proper sizing when measuring gases other than natural gas.



International Measurement and Control Systems

90 Main Street, PO Box 1605 • Tullytown, PA 19007
1-800-955-4GAS • Phone: (215) 946-2200 • Fax: (215) 943-2984
Email: sales@imacsystems.com www.imacsystems.com